



FP0197BK

FITTING INSTRUCTIONS FOR FP0197BK FORK PROTECTORS
BMW G310R 2017-



LEFT SIDE

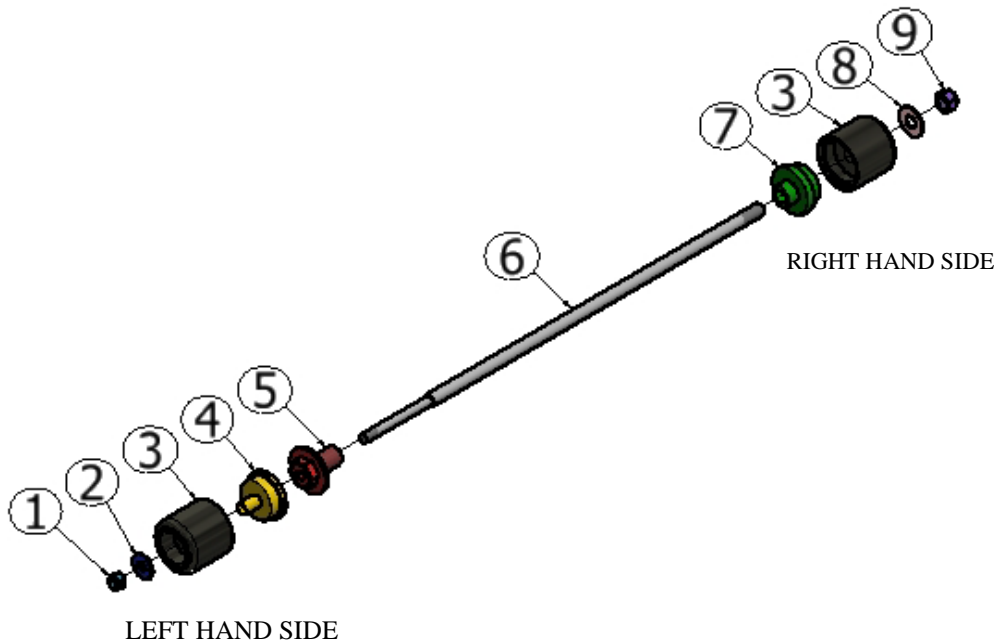


RIGHT SIDE

THIS KIT CONTAINS THE ITEMS PICTURED AND LABELLED BELOW.
DO NOT PROCEED UNTIL YOU ARE SURE ALL PARTS ARE PRESENT.

Please note that the way the kit is packed does not necessarily represent the way of mounting to the bike.

Please note that in cases where kits are packed with a plastic tube separating components on the spindle bar (this tube
THE PARTS SHOWN MAY BE REPRESENTATIVE ONLY (FOR CLARITY OF INSTRUCTIONS ONLY)



R&G Racing

Unit 1, Shelley's Lane, East Worldham, Alton, Hampshire, GU34 3AQ

Tel: +44 (0)1420 89007 Fax: +44 (0)1420 87301 www.rg-racing.com Email: info@rg-racing.com



FP0197BK

LEGEND

- ITEM 1 = M6 NYLOC NUTS (x1)
- ITEM 2 = M6 WASHERS (x1)
- ITEM 3 = R&G CRASH BOBBINS (B0445) (x2)
- ITEM 4 = L/H SPACER (S1046) (x1)
- ITEM 5 = SPECIAL BOLT (H0064) (x1)
- ITEM 6 = SPINDLE BAR (SB125) (x1)
- ITEM 7 = R/H SPACER (S0368) (x1)
- ITEM 8 = M8 WASHER (x1)
- ITEM 9 = M8 NYLOC NUT (x1)

TOOLS REQUIRED

- Socket set to include 2x 13mm & 17mm sockets.
 - Wrenches

FITTING INSTRUCTIONS

- Starting from the L/H, as you sit on the bike, remove the OEM spindle bolt using a 17mm socket and a wrench.
- Fit R&G special bolt (Item 5) in the same position as the OEM bolt just removed. Tighten to a specified torque setting.
- Fit the L/H spacer S1046 (Item 4) over the hex shaped special nut (Item 5) just fitted on the left hand side.
- From the kit, fit one R&G Bobbin (Item 3), M6 washer (Item 2) and M6 nut (Item 1) onto the smaller protruded end of the spindle bar (Item 5). Engage the nut so the nylon insert of the nut is fully engaged.
- Feed the spindle bar assembly through the spacer just fitted on the front wheel from the left hand side.
- Place the remaining spacer (S0368 – Item 7) over the exposed protruded end of the spindle bar so the spacer sits inside the OEM hex head shaped spindle head on the right hand side. Then slide the remaining R&G bobbin (Item 3) onto the spindle bar.
- Fit M8 washer (Item 8) and nyloc nut (Item 9) from the kit onto the thread and tighten both nyloc nuts using 13mm sockets and wrenches.
- Do not overtighten – the nyloc nuts will hold it tight

ISSUE 1 16/06/2017 (HH)

CONSUMER NOTICE

The catalogue description and any exhibition of samples are only broad indications of the Products and R&G may make design changes which do not diminish their performance or visual appeal and supplying them in such state shall conform to the order. The Buyer acknowledges no representation or warranty (other than as to title) has been given or will apply to the Products other than those in R&G's order or confirmation and the Buyer confirms it has chosen the Products as being of merchantable quality and suitable for its particular purposes. Where R&G fits the Products or undertakes other services it shall exercise reasonable skill and care and rectify any fault free of charge unless the workmanship has been disturbed. The Buyer is responsible for ensuring that the warranty on the motorcycle is not affected by the fitting of the Products. On return of any defective Products R&G shall at its option either supply a replacement or refund the purchase money but shall not be liable if the Products have been modified or used or maintained otherwise than in accordance with R&G's or manufacturer's instructions and good engineering practice or if the defect arises from accident or neglect. Other than identified above and subject to R&G not limiting its liability for causing death and personal injury, it shall not be liable for indirect or consequential loss and otherwise its liability shall be limited to the amounts paid by the Buyer for the Products or the fitting or service concerned. These terms do not affect the Buyer's statutory rights.

R&G RACING RETURNS POLICY (NON-FAULTY GOODS)

Returns must be pre-authorized (if not pre-authorized the return will be rejected). Goods may only be returned direct to us if they were purchased direct from us (customer must prove if necessary). Otherwise to be returned to original vendor. Goods must be in resellable condition, in the opinion of R&G Racing. All returns are subject to a 25% restocking and handling fee (25% of the gross value exc. P&P – at the prevailing price at time of purchase). The customer must pay any and all carriage charges. No returns of discontinued products, unless within 14 days of purchase. This policy does not affect your statutory rights and does not refer to faulty goods.

R&G Racing

Unit 1, Shelley's Lane, East Worldham, Alton, Hampshire, GU34 3AQ

Tel: +44 (0)1420 89007 Fax: +44 (0)1420 87301 www.rg-racing.com Email: info@rg-racing.com



FP0197BK

NOTICE DE MONTAGE POUR FP0197BK PROTECTIONS FOURCHE
BMW G310R 2017-



COTE GAUCHE



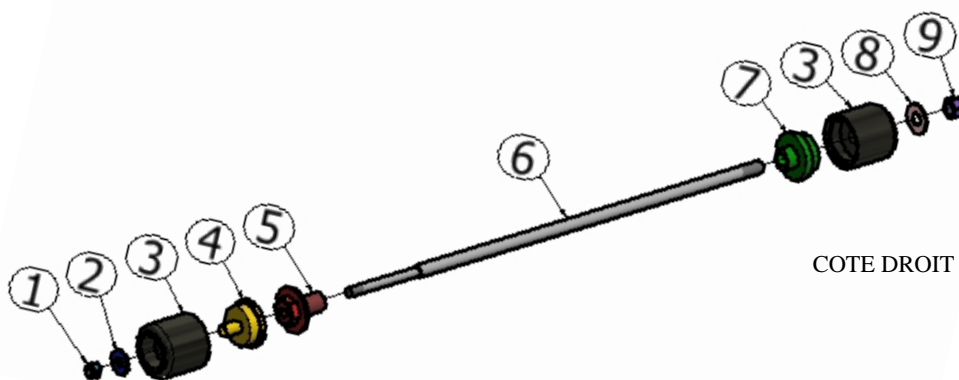
COTE DROIT

LE KIT CONTIENT LES ARTICLES EXPOSES CI-DESSOUS, VERIFIER QUE TOUTES LES PIECES SOIENT PRESENTES AVANT DE PROCEDER AU MONTAGE.

LA FAÇON DONT LE KIT EST EMBALLE NE CORRESPOND PAS FORCEMENT A LA FAÇON DE MONTER LES PIECES SUR LA MOTO.

NOTEZ QUE SI LES KITS SONT EMBALLES AVEC UN TUBE EN PLASTIC QUI SEPRE LES COMPOSANTS SUR L'AXE, CE TUBE DOIT ETRE JETE.

LES PARTIES PRESENTEES PEUVENT ETRE UNIQUEMENT REPRESENTATIVES (POUR LA CLARTE DES INSTRUCTIONS UNIQUEMENT.



COTE GAUCHE

COTE DROIT



FP0197BK

LEGENDE

- ARTICLE 1 = M6 ECROUS (x1)
- ARTICLE 2 = M6 RONDELLES (x1)
- ARTICLE 3 = BOBINES R&G (B0445) (x2)
- ARTICLE 4 = ENTRETOISE GAUCHE (S1046) (x1)
- ARTICLE 5 = BOULON (H0064) (x1)
- ARTICLE 6 = AXE (SB125) (x1)
- ARTICLE 7 = ENTRETOISE DROITE (S0368) (x1)
- ARTICLE 8 = M8 RONDELLE (x1)
- ARTICLE 9 = M8 ECROU (x1)

OUTILS REQUIS

- Clés à cliquet 2x 13mm & 17mm
 - Douilles

NOTICE DE MONTAGE:

- En partant du côté gauche (assis sur la moto) insérer le boulon d'axe en utilisant une clé à cliquet + douille de 17mm.
- Insérer un boulon R&G spécial (Article 5) dans la même position que le boulon d'origine tout juste enlevé. Serrer à la valeur de serrage appropriée.
- Insérer l'entretoise du côté gauche S1046 (Article 4) sur l'écrou spécial (Article 5) tout juste inséré du côté gauche de la moto.
- Monter une bobine R&G (Article 3), une rondelle M6 (Article 2) et un écrou M6 (Article 1) sur l'extrémité dépassant la plus petite de l'axe (Article 5). Engager l'écrou de façon à ce que l'insert de l'écrou soit complètement engagé.
- Passer l'ensemble dans l'entretoise tout juste insérée sur la roue avant du côté gauche.
- Placer l'entretoise restante (S0368 – Article 7) sur l'extrémité dépassant de l'axe pour que l'entretoise se place sur l'écrou d'axe avant du côté droit. Ensuite, glisser la bobine R&G restante (Article 3) sur l'axe.
- Insérer la rondelle M8 restante (Article 8) et l'écrou (Article 9) du kit sur le filetage puis serrer les 2 écrous à l'aide d'une clé à molette + douille 13mm.
- Ne pas trop bloquer – les écrous fixent l'ensemble.

ISSUE 1 16/06/2017 (HH)

CONSUMER NOTICE

The catalogue description and any exhibition of samples are only broad indications of the Products and R&G may make design changes which do not diminish their performance or visual appeal and supplying them in such state shall conform to the order. The Buyer acknowledges no representation or warranty (other than as to title) has been given or will apply to the Products other than those in R&G's order or confirmation and the Buyer confirms it has chosen the Products as being of merchantable quality and suitable for its particular purposes. Where R&G fits the Products or undertakes other services it shall exercise reasonable skill and care and rectify any fault free of charge unless the workmanship has been disturbed. The Buyer is responsible for ensuring that the warranty on the motorcycle is not affected by the fitting of the Products. On return of any defective Products R&G shall at its option either supply a replacement or refund the purchase money but shall not be liable if the Products have been modified or used or maintained otherwise than in accordance with R&G's or manufacturer's instructions and good engineering practice or if the defect arises from accident or neglect. Other than identified above and subject to R&G not limiting its liability for causing death and personal injury, it shall not be liable for indirect or consequential loss and otherwise its liability shall be limited to the amounts paid by the Buyer for the Products or the fitting or service concerned. These terms do not affect the Buyer's statutory rights.

R&G RACING RETURNS POLICY (NON-FAULTY GOODS)

Returns must be pre-authorized (if not pre-authorized the return will be rejected). Goods may only be returned direct to us if they were purchased direct from us (customer must prove if necessary). Otherwise to be returned to original vendor. Goods must be in resellable condition, in the opinion of R&G Racing. All returns are subject to a 25% restocking and handling fee (25% of the gross value exc. P&P – at the prevailing price at time of purchase). The customer must pay any and all carriage charges. No returns of discontinued products, unless within 14 days of purchase. This policy does not affect your statutory rights and does not refer to faulty goods.

R&G Racing

Unit 1, Shelley's Lane, East Worldham, Alton, Hampshire, GU34 3AQ

Tel: +44 (0)1420 89007 Fax: +44 (0)1420 87301 www.rg-racing.com Email: info@rg-racing.com